

NEWSLETTER

April – May - June 2012
Volume Thirteen Number Two



SKETCHLEY COTTAGE

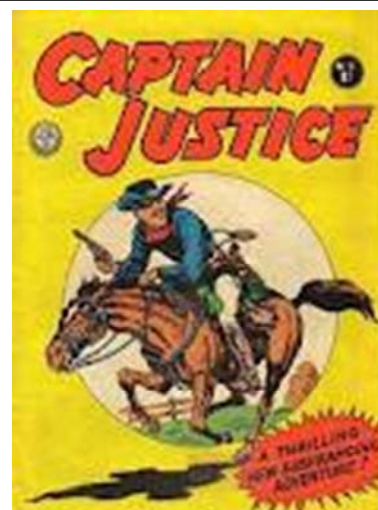
Linking yesterday with tomorrow

RAYMOND TERRACE & DISTRICT
HISTORICAL SOCIETY INC.
PO BOX 255
RAYMOND TERRACE NSW 2324

www.sketchleycottage.org.au
email: info@sketchleycottage.org.au
phone: 02498761035

Patrons	Bob Baldwin - MP Craig Baumann - MLA Sharon Grierson MP Robyn Parker - MP
President	Moira Saunderson Phone: 4987 7661
Vice President	Boris Sokoloff Phone: 4954 8976
Treasurer	Trish Harris Phone: 49873486
Secretary	Ellen Gordon Phone mobile 0414 874 534 Email ellengordon3@gmail.com
Minutes Secretary	Helen Giggins
Research Officer	Elaine Hall Phone: 4987 3477
Museum Curator Assistant Curator	Moira Saunderson Boris Sokoloff
Newsletter Editor	Faye Clark Phone: 49876435

COMMITTEE: David Gunter Laurel Young Laraine Brown



Captain Justice
By
Monty Wedd

BITS and PIECES

- A Trivia Night Fundraiser is being held on Fri 20 July. Hope to see you there.
- Membership renewals are now due. Please fill in the accompanying form, and return it with your fee.
- Please email me any story that you have to contribute at clarkys@bigpond.net.au.

DATES FOR THE DIARY

May	7	Committee Meeting
	18	General Meeting
June	4	Committee Meeting
	15	General Meeting
July	2	Committee Meeting
	20	Trivia Night – starts at 6.30pm
August	6	Committee Meeting
	17	General Meeting

VALE - MONTAGUE “MONTY” WEDD.

On Tuesday 15th May 2012, family & friends gathered at St. Paul’s Anglican Church, Stockton to farewell and celebrate the life of former member, Montague “Monty” Thomas Archibald Wedd.

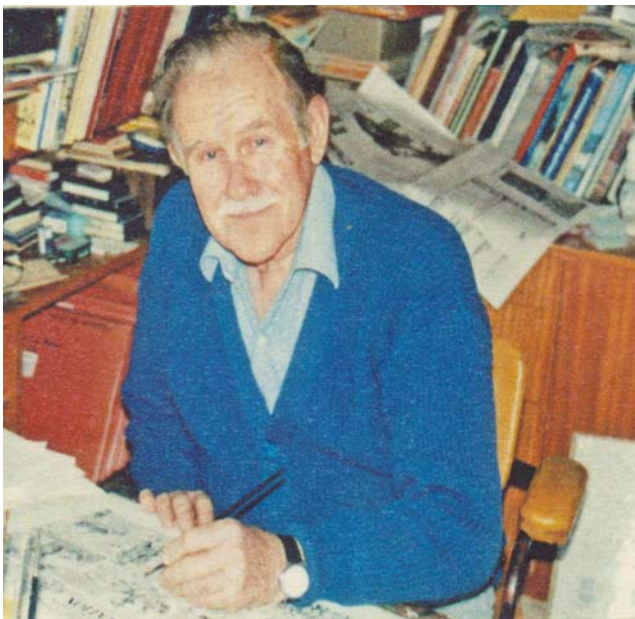
During his 91 years, Monty packed a mighty punch with his many contributions towards creating an understanding and love of early Australia’s colonial history

He and his life long partner, Dorothy arrived in Williamtown in 1986, where they established The Monarch Museum, one of the very few privately owned museums in the Hunter.

A dedicated historian, Monty told the story of early colonial history through his own pen & ink drawings in the Daily Telegraph. He also invented Dollar Bill as a cartoon character to familiarise people with the change of currency.

He was awarded The Medal of the Order of Australia and a lifetime achievement award from the Australian Cartoonists Association.

Always a gentleman, Monty will be missed by so many and we extend our sympathy to Dorothy and her family.



THE TALE OF TWO FRIENDS:

Sam Robinson was one of many State School boys, who were sent up to our area to work on the local farms, particularly at Millers Forest.

These boys were usually orphans or had only one parent and even though they provided cheap labour, they were generally well cared and provided for.

Sam Robinson was sent to Mr. James Gulliver’s farm together with the Nissen brothers and William Atkins.

As these boys had no connections to our area, it was usually difficult to discover any family or other information concerning them and Sam Robinson was no exception.

Sam Robinson enlisted in WW1 in 1915 and was killed in France in 1916. We know this because his best friend, George Matich sent a letter home to Mr. Gulliver, explaining that both he and Sam were best mates and had made a pact that if either was to be killed the other mate would write home.

All this we knew until recently, when two colleagues, working on local WW1 casualties were given a photo of Sam and all the letters he had written home to Mrs. Gulliver while he was at war. Sam always addressed his letters to Mrs. Gulliver as 'My Dear Friend'. Mrs. Gulliver's grand daughter had kept all Sam's papers and letters which have now been donated to our society.



Above: George Matich
Enlisted - Sept. 1915
Died - France June 1918



Above: Sam Robinson
Enlisted - 1915
Died - 1916

By Moira Saunderson.

NEWS FROM THE ROYAL AUSTRALIAN HISTORICAL SOCIETY.

Family History Resources



Did you know that your library card gives you free onsite access to the amazing databases offered by ancestry.com. Just ask a librarian at your state/territory library or the National Library of Australia to get you started.

Plus, you can search thousands of family history resources offered online, including every issue of London's *The Times* from 1785 to 2006, from home or anywhere else.

All Australian residents can enjoy free 24/7 access to millions of local and international newspapers, ebooks, full-text-journals, magazines and online encyclopedias. All you need is a library card. Membership is free. For quality information on any subject, visit your local state/territory library or the National Library of Australia online or onsite.

RAHS secures FREE ACCESS for members with new activity search site, todokids.com.au

Businesses, charities, clubs and RAHS members can now benefit from an innovative, new website called todokids.com.au, which connects children's services and activity providers with families looking for things "todo" with their kids.

In partnership with todokids.com.au, RAHS has secured 12 months free access for members who wish to list before 24 May.

Go to www.todokids.com.au, obtain a username and password from the homepage, enter your details and use your special access code – 100nfp24apr

The site works similarly to wotif.com, but lists activities instead of accommodation. It allows users to refine the search according to their children's age, cost, location and type of activity. todokids allows users to use the same site regardless of where they are and provides a great summary that shows what is available in local communities 'at a glance'.

For more information visit www.todokids.com.au or contact jodi@todokids.com.au.



SPECIAL ANNOUNCEMENT

DID YOU KNOW.....in NOVEMBER 1837, The Sydney Gazette announced that the VILLAGE OF RAYMOND TERRACE had been proclaimed by the Governor R. Burke??

DID YOU KNOW.....in NOVEMBER THIS YEAR, 2012, will be the 175th ANNIVERSARY of our town??

To mark ***OUR FOUNDATION DAY*** on 24th NOVEMBER, the Raymond Terrace Historical Society intends organising a day of celebrations culminating with a PIONEER DINNER at SKETCHLEY COTTAGE. This will also include music, old-time activities and re-connecting with our early pioneer families at the adjacent Bettles Park.

ARE YOU A MEMBER OF A PIONEER FAMILY.....please contact us for a chat

Open Day at the Royal **Library Open House and Afternoon Tea** **Saturday 30 June 2012**

We invite you to join the RAHS for a Saturday Open Day at History House. It begins with an open day at the RAHS library and concludes with afternoon tea in the drawing room. Members are welcome to drop in at any time during the morning and need not stay for the afternoon.

Library Open: Tours, Research and Workshop

10:00 a.m. to 2:00 p.m.

From 10:00 a.m. until 2:00 p.m., the RAHS library will be open for tours and research, hosted by Librarian Donna Newton. Associate Professor Carol Liston will

be present to assist researchers and show how to use some of the library's new resources. .

If you have never visited the RAHS library, this is your opportunity to explore the extensive resources on offer.

Free. Bookings recommended.

Afternoon Tea at the Royal

2:00 p.m. to 4:00 p.m.

History House's Victorian drawing room will be the setting for a unique afternoon tea from 2:00 p.m. to 4:30 p.m.. Join RAHS members and Councillors for a delightful day of tea and wine, talks and music. The schedule is:

2:00 p.m. to 2:20 p.m.: The President, Emeritus Professor David Carment, will talk on issues concerning the RAHS.

2:20 p.m. to 3:00 p.m.: RAHS Councillor Dr Kathrine Reynolds will talk on "*Assisted Skills Migration to Australia in the nineteenth century - the German Vinedressers of Alexander Berry's Estate, Coolangatta, near Berry*".

3:00 p.m. to 4:00 p.m.: Afternoon tea with sandwiches, scones, cream and jam, cake and selected wines from the Coolangatta Estate vineyard.

4:00 p.m. to 4:30 p.m.: Musical entertainment relevant to Alexander Berry devised by Dr Ian Jack with the help of the Collard & Collard grand.

\$15 Members/\$20 Non-members

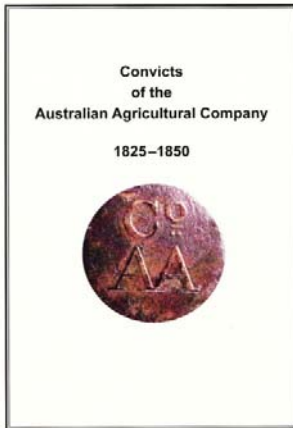
Bookings for afternoon tea are requested on 02 9247 8001 or history@rahs.org.au.

Paid parking is available in the vicinity of History House.



Convicts of the Australian Agricultural Company, 1825-1850

Compiled by Marie Dial & Yvonne Fraser and published by Port Stephens Family History Society



Established on the northern shores of Port Stephens early in 1826, Carrington was the first headquarters of the Australian Agricultural Company. The Company's main aim was to raise sheep which would yield fine wool for the English market. Its labour force consisted of indentured servants and convicts, predominantly male, but with a small proportion of females. Many of the convicts were the pioneers of Port Stephens and the Hunter Valley but their contribution to the development of these areas has been overlooked, largely due to their anonymity. This book aims to redress that oversight by documenting their identities, their fortunes while with the Company, and, where possible, what became of them after they left it.

[ISBN: 0958098328. Available for purchase from the Society at a cost of \$30 plus \$10 shipping. Contact: Port Stephens Family History Society Inc., PO Box 32, Tanilba Bay NSW 2319 or email psfhs@yahoo.com.au]

Wallabadah and the First Fleeters Memorial Garden.

Recently we took a family holiday and travelled along the inland NE England highway heading towards Inverell. At Wallabadah, we stopped at the first Settlers Memorial Garden, for a rest. It was a great surprise to find this garden and be able to enjoy the caringly set out grounds.

Wallabahdah was originally called Thalabuburi by the Kamilaroi people, and as Manfield's Point by Europeans, Wallabadah derives its current name from Wallabadah Station, a 44000 acre holding taken up in 1835. This little township began to develop in the 1850s - it was the road junction for the mail coaches from the north and north-west. This proved too tempting for Thunderbolt, then the most notorious bushranger in the colony, who robbed the northern mail coach at Wallabadah in 1867.

This once thriving, busy rural centre did not progress when the rail went to its neighbour Quirindi in 1877. But the town still retains its early charm. Claret Ash trees line the street on the approach road from Quirindi. To the right as you head into town is the Anglican Church built in 1896. On the highway is the Marshall MacMahon Hotel which dates from about 1867. Across from the hotel is the Catholic Church built in 1910. Other historic buildings include the public school (1879) and school residence (1898).

Wallabadah became a soldier settlement location after World War II. Residents in the town, known locally as 'Wallaby', erected a sculpture of a wallaby sitting on a rock as a bicentennial project in 1988.

The nation's only garden memorial to the First Fleet is located off the New England Highway near the sculpture, and residents from all over Australia are drawn to the First and Second Fleet Memorial Garden to see whether their distant relatives were aboard those first vessels. This unique garden, built by a renowned stone mason and First Fleet descendent, records the names in stone ship by ship of all those aboard the First and Second Fleet. A nearby creek-side picnic area provides the ideal setting for a barbeque after the garden walk and welcomes campers.

One of the largest undisturbed areas of White Box forest left in Australia is located at the Wallabadah cemetery. It is worth the visit to get a good feel for the country prior to European settlement.



The First Fleeters Memorial Garden was opened on 26 January, 2005, to pay homage to the first European settlers, and to local stonemason and First Fleet descendant Ray Collins-Cross, who single-handedly erected the memorial.

Proud of his ties to First Fleet convict John Cross, Ray first dreamt up the memorial. He started shaping the first of 78 sandstone and zeolite headstones, which bear the names of all 1520 original European settlers. "John Cross, my great, great, great, great grandfather was born in Wiltshire, England in 1757 and was 29 years old when he was arrested for stealing a sheep," Ray said. "He received the death penalty (after being tried and found guilty at New Sarum) before he was sentenced to seven years transportation," he said.

After arriving in Sydney, John Cross worked as a farmhand and is mentioned in early offence records for exchanging rations for clothes and selling suspected stolen stock. Cross met Mary Davidson, a convict who arrived on the Lady Juliana in 1790. The couple had nine children. In 1824, John Cross died and was laid to rest at Windsor.

John's son David was the stonemason, who built the Victoria Inn, which still stands at Cross Park at Wisemans Ferry, so maybe the craft of shaping sandstone has run in the family.

Ray Cross, who contributed his own funds to the memorial, also gained assistance from the North-West Fellowship of First Fleeters, the group of historians who claim descendancy from those who first arrived in 1788.

The innovative and picturesque First Fleet Memorial Gardens consist of eleven circular gardens, representing the ships of the First Fleet approaching a large garden in the shape of Australia. A winding cobblestone path connects the Gardens, each of which has a number of surrounding sandstone tablets inscribed with the names of the persons who sailed on that ship. Within each garden is a stone tablet featuring the name and a pictorial sketch of that particular ship.

The Second Fleet Gardens consist of two gardens with stone tablets arranged by ship. Both gardens have interpretative signage largely drawn from the logs and memoirs of the participants.



The gardens are well worth a look. We wished that we had been able to spend more time enjoying the area, but we had to move on. We certainly plan to return, and spend more time in the gardens and exploring the general area.

by Faye Clark

References

northerndailyleader.com.au/news

<http://www.visitquirindi.com.au>

<http://culturalawards2009.lgsa.org.au>

<http://www.heritageaustralia.com.au/>

Trivia Night

Raymond Terrace Historical Society invites you to a night of fun and frivolity.

We are holding a **fund-raising** trivia night, and would love for you to come along with friends and family.

Win Prizes

Cost is \$5 per person. Limit of 6 people per table.

Book early to avoid disappointment!

Bring nibbles; tea and coffee supplied.

Friday 20th July
6.30pm

Raymond Terrace Senior Citizens and Community Centre
Irrawang St. Raymond Terrace

For bookings or more info.
Phone: **0404 491 469**
Email: info@sketchleycottage.org.au

www.sketchleycottage.org.au

NEWS FROM M&G

My Precious Child - Dressing the Edwardian Child exhibition



Early 20th century infants were usually treasured by their parents. Children were dressed up and displayed to adoring family and friends and much of their decorative clothing has been preserved for us to enjoy today.

An exhibition of such clothing and related accessories has been mounted by Parramatta & District Historical Society member, Christine McKenna FAIHA, utilising items from the Society's collection and those of Linnwood House and several of their members.

When: until July 2012, Thursdays - Sunday, 11.00am - 4.00pm

Where: Hambledon Cottage House Museum, corner Hassall Street and Gregory Place, Parramatta

Admission: included in entry fee \$4.00, \$3.00 concession and \$2.00 children

Further information: www.hotkey.net.au/~parramattahistry/

Image: *My Precious Edwardian Children*. Courtesy the Parramatta & District Historical Society.

PUBLICATIONS FOR SALE

They Were Here Vol 1	\$ 35
They Were Here Vol 2	\$ 40
War Memorials of the Port Stephens Area	\$ 25
Raymond Terrace History & Heritage	\$ 25
Marriages from the Gloucester Examiner & Raymond Terrace Examiner 1894 – 1926	\$ 15
Clearing Out Sales Raymond Terrace & Lower Hunter 1895 – 1930	\$ 15
Soldiers & Memorials of Seaham	\$ 25
Raymond Terrace Pioneer Register	\$ 30
Cemetery Master Index	\$ 25
Landholders & Others	\$ 15
Raymond Terrace Pioneer Cemetery	\$ 5
Obituary Books Vol 1 1893 – 1915	
Vol 2 1916 – 1925	
Vol 3 1926 – 1930, 1951 & 1953	

Buy any two volumes of Obituaries for \$45 or all three publications for \$65. Purchased individually the Obituary Books cost \$25.

We also have available for sale a large selection of publications not produced by the Society but covering the local district among them are:

Seaham School of Arts	\$ 15
Short History of Raymond Terrace	\$ 5

All prices exclude postage

SKETCHLEY COTTAGE MUSEUM is located opposite Bettles Park, Raymond Terrace and is open to the public by appointment. Bus groups are most welcome, please contact the Secretary by email or ring Sketchley Cottage on 498761035 to arrange a date and time.

The Society's **RESEARCH ROOMS** are located in the Port Stephens Library, cnr William & Port Stephens Streets, Raymond Terrace

Open Monday & Wednesday
9.30 am to 2 pm - other times by appointment

Membership of the Society is open to everyone with an interest in Local and Family History.

Joining Fee \$2.00 Concession \$15.00 Full Membership \$20.00

Family \$25.00 Monthly Meetings are held on the third Friday of the month at Senior Citizens Building, Raymond Terrace at 7.00 pm.